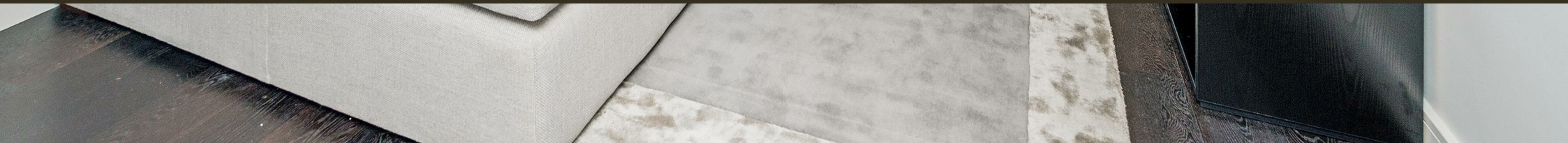




Moore House, 2 Gatliff Road  
London SW1W

GARTONJONES.COM



# Moore House, 2 Gatliff Road London, SW1W

## £725 Per Week

GARTON JONES.COM

8 Gatliff Road  
Grosvenor  
Waterside  
Chelsea  
London  
SW1W 8DP

Lettings:  
+44 (0) 20 7730 5007  
gws@gartonjones.com  
www.gartonjones.com

A one bedroom apartment to rent of approx. 572sq.ft (53.2sq.m) in Moore House, located close to the banks of the River Thames. This FURNISHED apartment further benefits from an OPEN PLAN reception room, a smart kitchen, wood flooring, comfort cooling, modern bathroom, excellent storage including built in wardrobes to the master bedroom and underground parking. 24 HOUR CONCIERGE, GYM and SPA. On-site Sainsbury's Local, coffee shop and private kids club. SLOANE SQUARE and VICTORIA station with Gatwick Express are within walking distance. Available via Garton Jones on-site office at Grosvenor Waterside (underneath Bramah House).

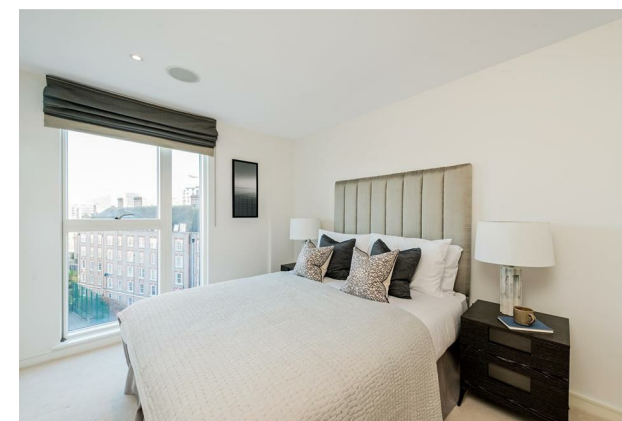
Please note furniture may differ to that shown in the current photos. External maintenance works scheduled to begin 2023. If you require further information, please contact our office.

Council Tax: Westminster City Council (band E).

EPC Rating: B (82)

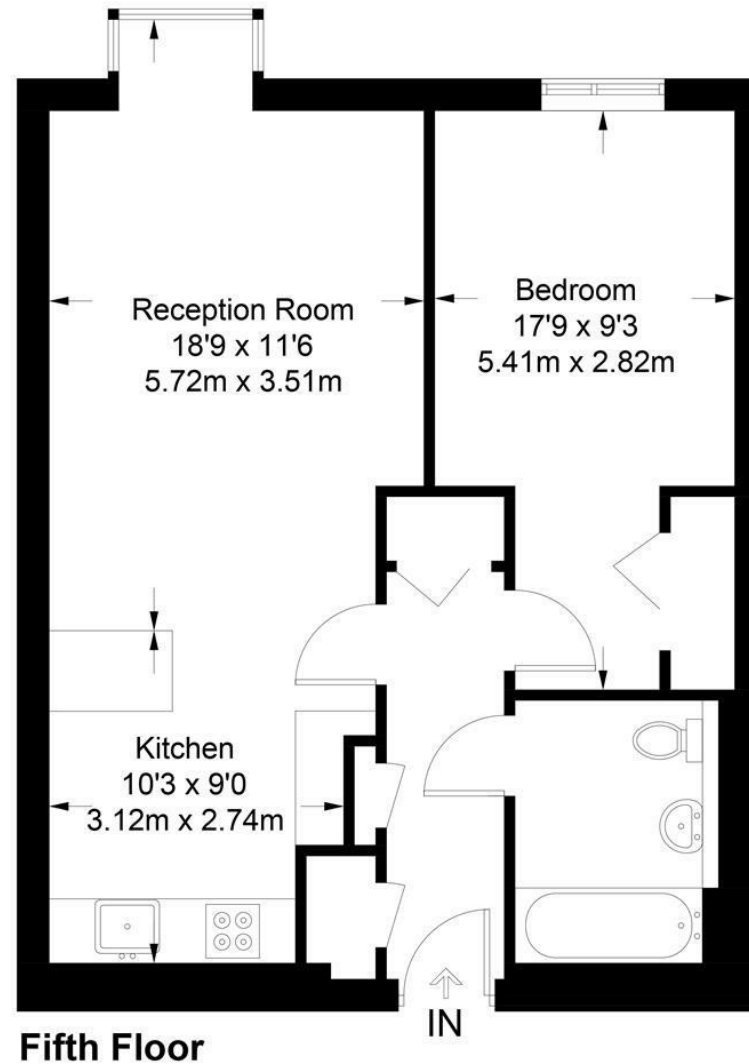
12 month minimum term. 5 week deposit required.

- 572sq.ft (53.2sq.m)
- 1 Double Bedroom
- Dual Aspect Open Plan Reception Room
- Kitchen with Miele Integrated Appliances
- Luxury Bathroom Suite
- 24 Hour Concierge
- Secure Underground Parking
- Residents Gym with Spa Facilities
- On-Site Sainsbury's, Coffee Shop & Bakery, Purple
- Walking Distance to Sloane Square & Victoria Station



**Moore House**

Approximate Gross Internal Area = 572 sq ft / 53.2 sq m



Not to scale, for guidance only and must not be relied upon as a statement of fact.  
All measurements and areas are approximate only and have been prepared in  
accordance with the current edition of the RICS Code of Measuring Practice.



